



---

# OneCart Theft prevention & detection

---

Out of the Ordinary

“ Mo money, Mo  
problems - Notorious  
B.I.G



Investec  
Private Banking

OFFER ZEN



.....  
**Hello!** 🖐️  
.....



I'm Michael. I work at OneCart.

- **Problem:** OneCart has around 140+ shoppers working daily across SA. Each shopper has their own OneCart debit card and are fulfilling customer orders. They steal!
- **Why solve this?** Reduce shopper theft and be more proactive to shrinkage
- **Solution:** Real-time alerts of suspicious activity on cards.
- **Tech:** Investec Programmable Card, Serverless, Slack webhooks, QlikView.

Out of the Ordinary

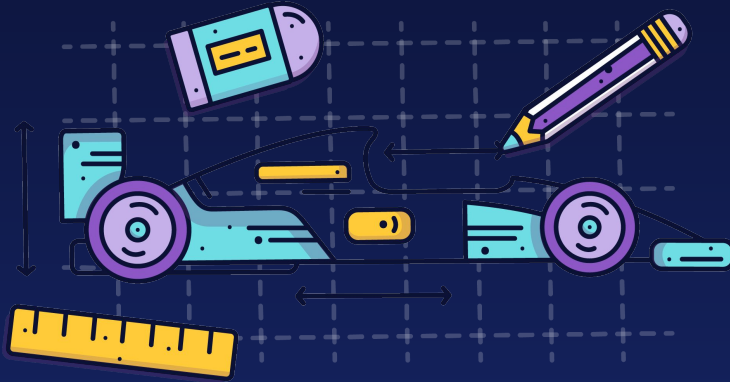
“ Mo money, Mo  
problems - Notorious  
B.I.G



*Out of the Ordinary*

 **Investec**  
Private Banking

**OFFER** ZEN



---

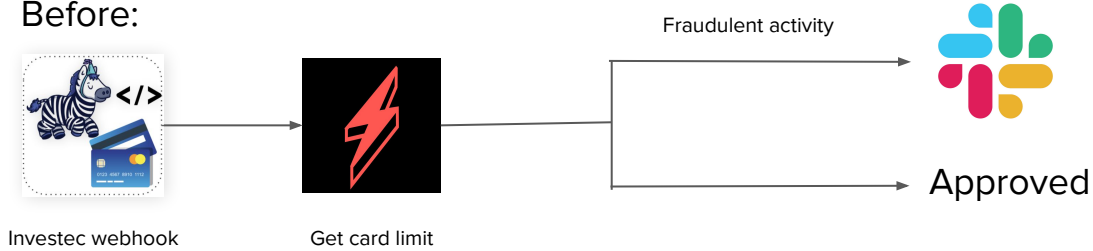
# How it works

---

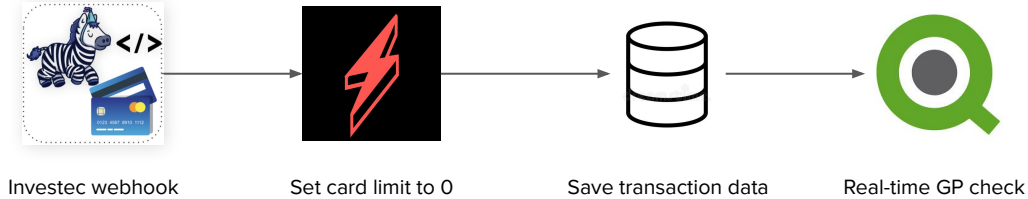
Out of the Ordinary

# How it works

Before:



After:



Out of the Ordinary

# How it works



**OneCart** APP 9:21 AM

Potential fraud on:

\*Card:\*422254XXXXXX7072

Merchant: Makro Woodmead

Amount: R191.9



**OneCart** APP 9:38 AM

Potential fraud on:

\*Card:\*422254XXXXXX7049

Merchant: THE FRIDGE WINE & SPIRI

Amount: R183

Total Item Supplied Value	Slip Total	Slip Total vs Value Supplied
R2,699.33	R2,605.47	-R93.86
R712.40	R712.80	R0.40
R1,627.84	R3,259.20	R1,631.36
R141.49	R129.73	-R11.76
R126.99	R118.72	-R8.27
R504.98	R507.36	R2.38

Out of the Ordinary

# Results

- Prevent fraud before it happens
  - Not possible before
- Time to detect possible fraud
  - 24 - 48 hours -> Instant
- Can associate every transaction with an order
  - Custom reports
  - Track GP in real-time

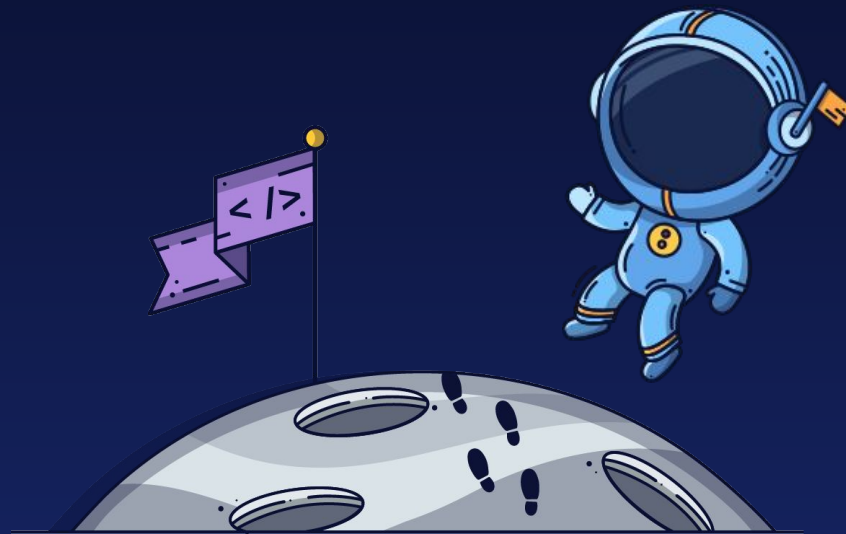
*Out of the Ordinary*



# Challenges encountered

- Not meeting 2s latency for before webhook - Keep containers warm
- Webhook called twice occasionally - reported
- Successful transaction when not actually - reported
- Differences between simulator and prod - In progress
- Single repository of code applied to all cards - In progress
- Central logging

*Out of the Ordinary*



---

# Next Steps

---

*Out of the Ordinary*

# Next steps

- Scale from 5 to 45 cards, thereafter 200
- Automatically deactivate cards when suspicious activity occurs and alert shoppers

*Out of the Ordinary*



Get Involved!

*Out of the Ordinary*

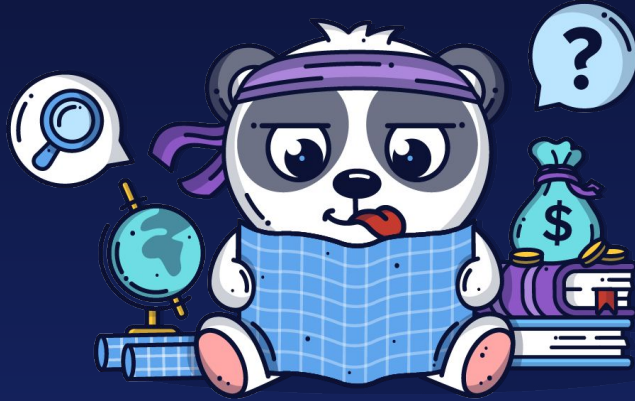
 **Investec**  
Private Banking

**OFFER** ZEN

# Get in touch

- Michael on Slack
- PS: We are hiring:
  - Node.js, serverless, AWS, React, React-native

*Out of the Ordinary*



---

# Questions?

---

Out of the Ordinary