



---

# Investec @ Home

---

*Out of the Ordinary*

.....  
**Hello!** 🖐️  
.....

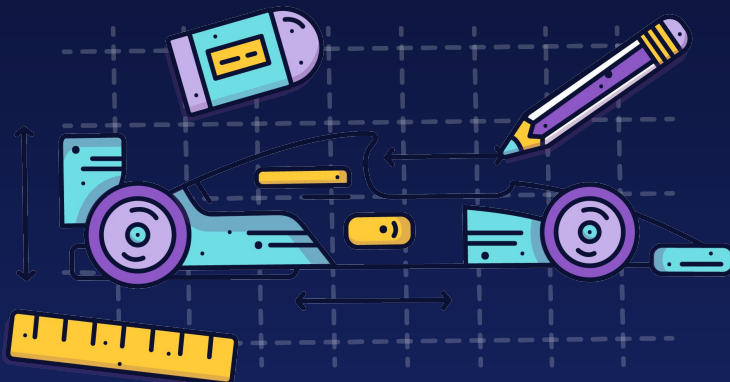


Jörg Wunderlich

**Investec @ Home:**

- A quick and dirty experiment to get my Investec account to interact with physical devices or a smart home
- Using HomeBridge, Node.js, MQTT, HomeKit

Out of the Ordinary



---

# Architecture

---

Out of the Ordinary

# Architecture

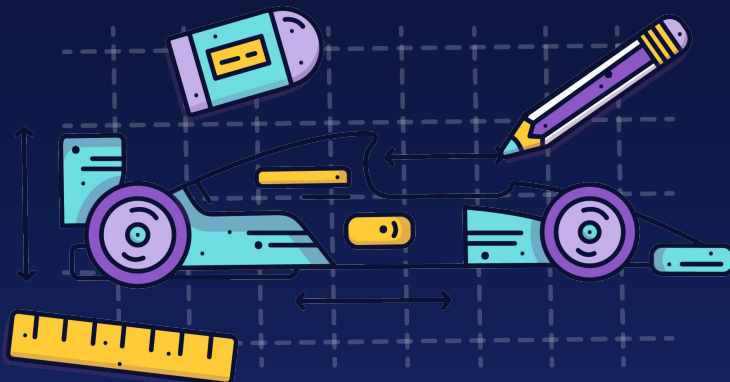


*Out of the Ordinary*

# Architecture

- System Components:
  - HomeBridge: <https://homebridge.io>
  - Shiftr.io MQTT Broker: <https://shiftr.io>
  - A node.js script with the following dependencies:
    - Express
    - MQTT
  - A working iOS or MacOS device

Out of the Ordinary



---

# How it works

---

*Out of the Ordinary*

# How it works

- HomeBridge (running in a docker container) acts a bridge between HomeKit and non-native devices
- A small node script acts as the authorizer and glue between Investec and HomeBridge
- Both HomeBridge and the authorizer script subscribe and emit MQTT messages to a cloud MQTT broker (shiftr.io)
- The Investec card is registered as an MQTT lock accessory with HomeBridge

*Out of the Ordinary*

# How it works

- The Investec card can be locked/unlocked through HomeKit (Siri, Home App, etc.) or any MQTT capable device (Arduino, Raspberry Pi).
- HomeBridge sends an MQTT message to the broker
- The authorizer script subscribes to these messages and updates its internal state accordingly.
- After the card has been locked, it sends an MQTT confirmation message to the broker. The broker sends the confirmation upstream.

*Out of the Ordinary*





Get creative!

*Out of the Ordinary*

 **Investec**  
Private Banking

**OFFER** ZEN

# Get creative

- Although implemented with Apple's HomeKit, the approach is universal and can easily be adapted to Google Home, Alexa or bare MQTT by replacing HomeBridge with HomeAssistant, OpenHab, etc.
- Nothing stops us from implementing different accessories, a sensor could be used to "read" account balances, spending, etc.
- Scenes & Automations (i.e. automatically lock your card at night)

*Out of the Ordinary*

# Get creative

Break out into the real world. Control physical devices.  
(i.e. open the cookie jar on pay day)

*Out of the Ordinary*



---

# Questions

---

*Out of the Ordinary*